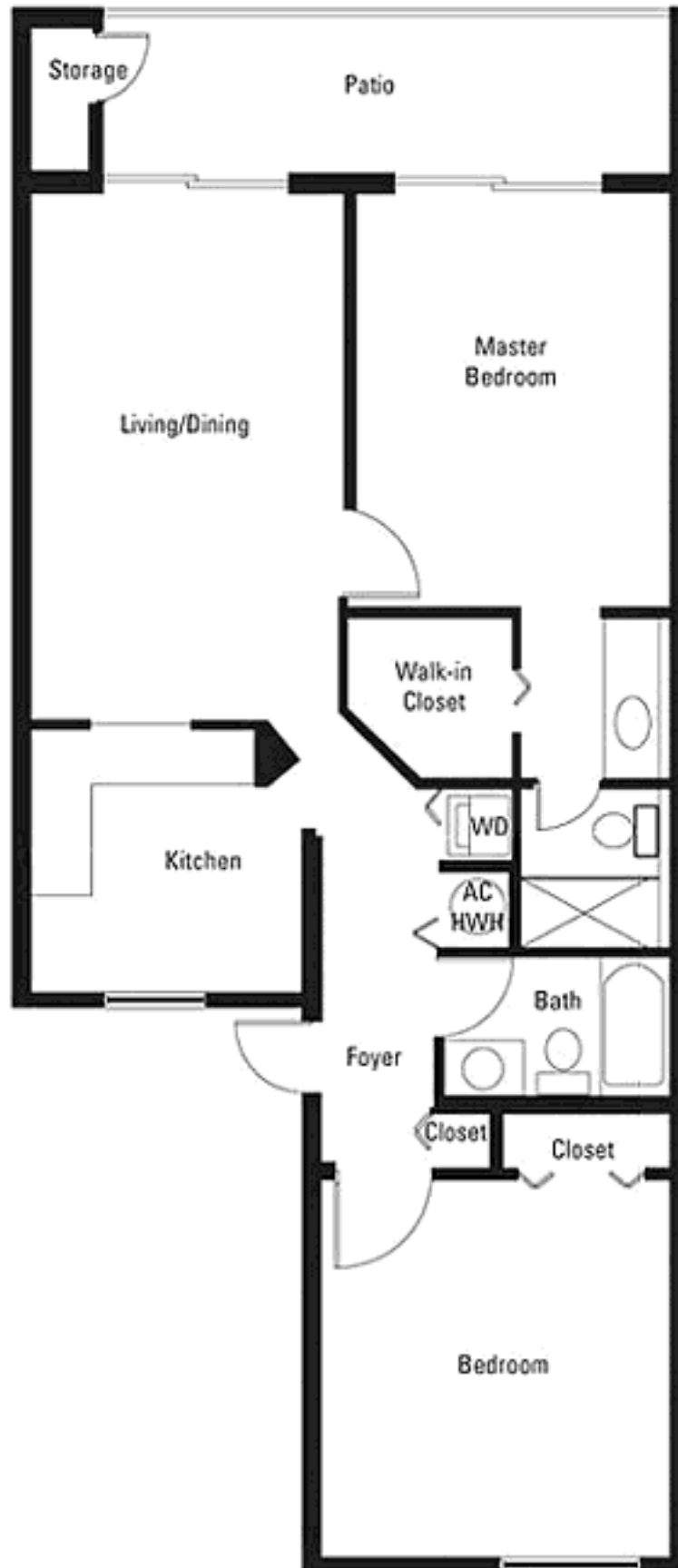


# Boca Condo Conversion 2 bedrooms and 2 bathrooms.

Beverly floor plan

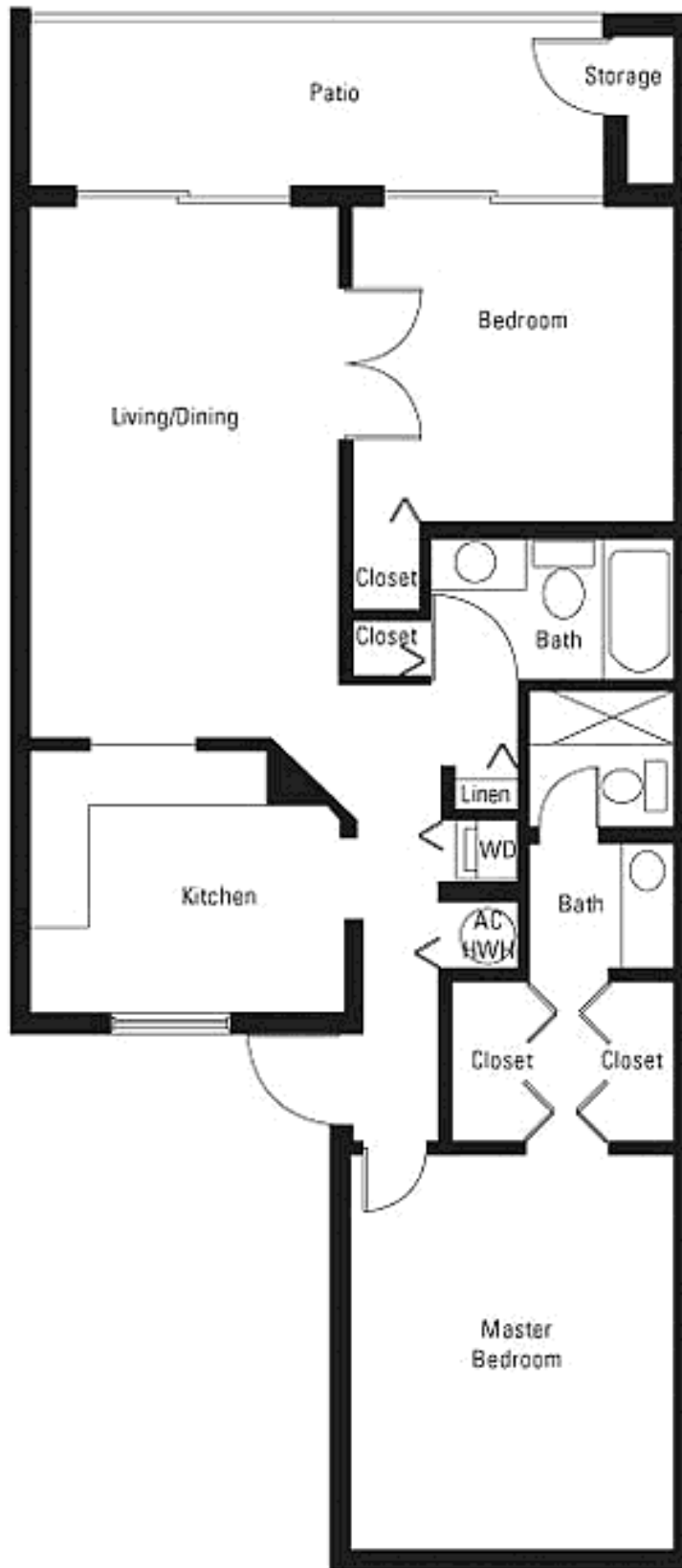
Total Area: 1,200 square feet *(1,200 sf interior and 0 sf balcony)*



# Boca Condo Conversion 2 bedrooms and 2 bathrooms.

**Hollywood** floor plan

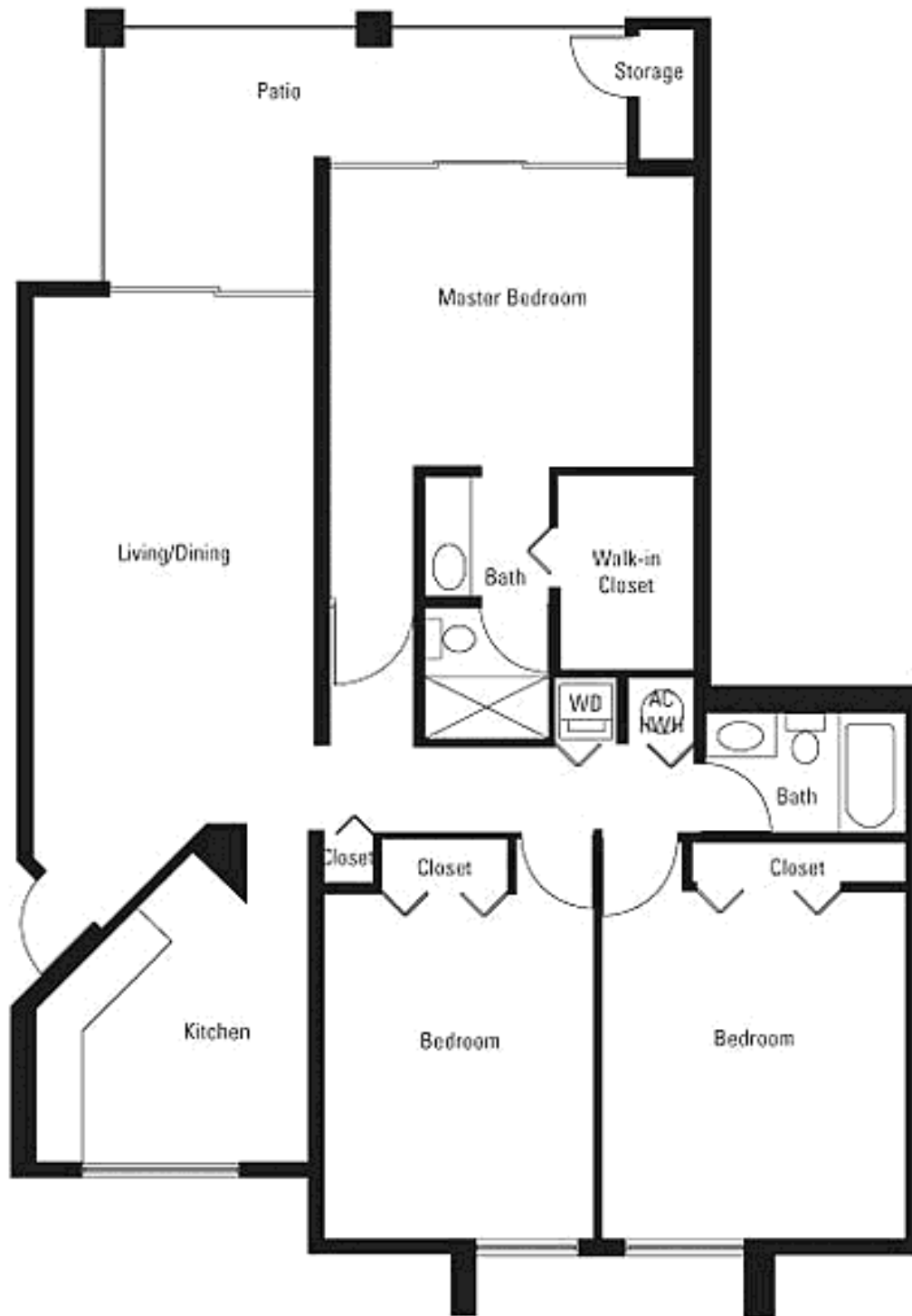
Total Area: 1,200 square feet (1,200 sf interior and 0 sf balcony)



# Boca Condo Conversion 3 bedrooms and 2 bathrooms.

Laguna floor plan

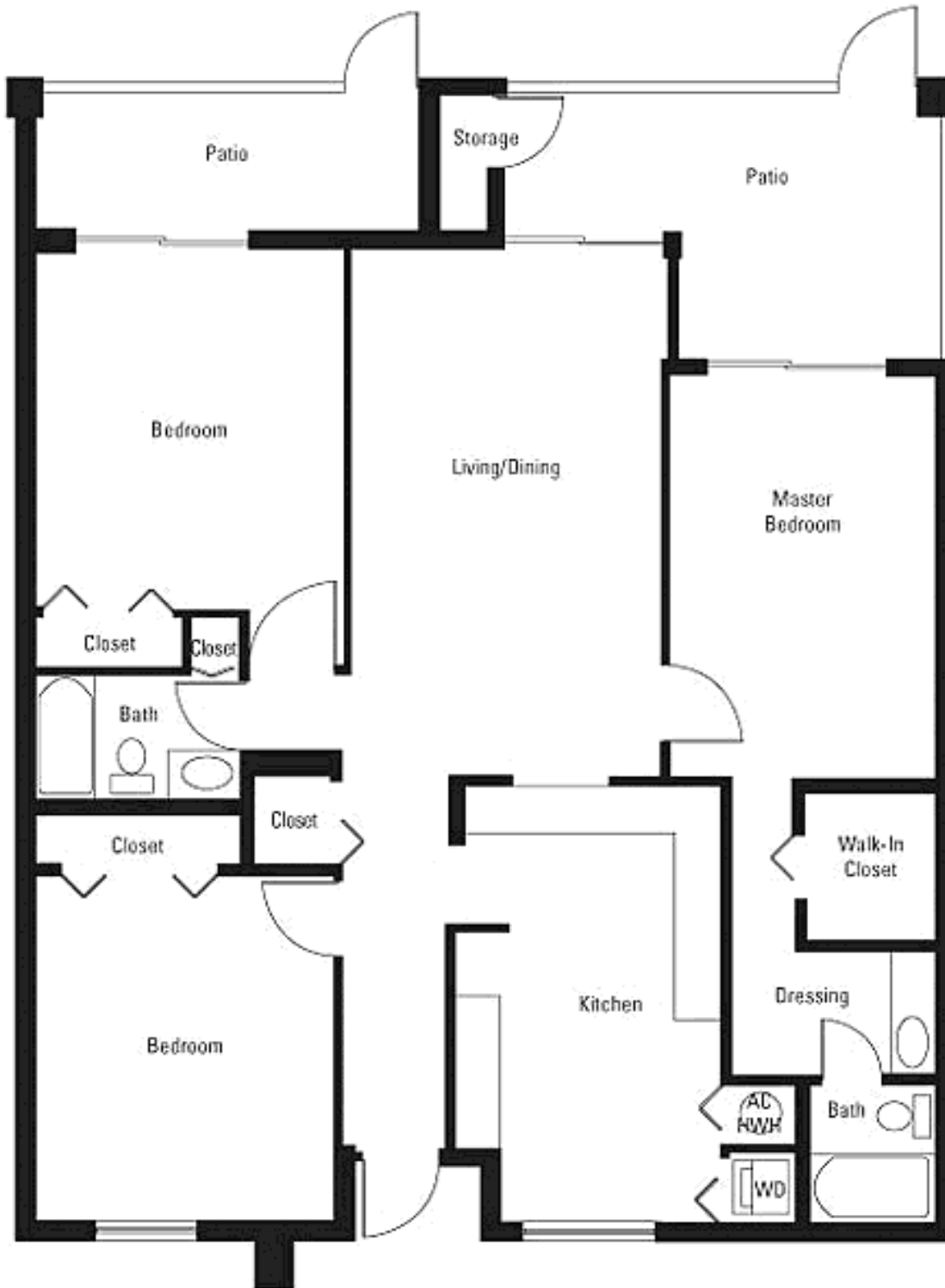
Total Area: 1,600 square feet (1,600 sf interior and 0 sf balcony)



# Boca Condo Conversion 3 bedrooms and 2 bathrooms.

**Malibu** floor plan

Total Area: 1,6 6 square feet (1,650 sf interior and 0 sf balcony)



**MALIBU**

3 BEDROOM / 2 BATH  
1,650 SQUARE FEET

# Boca Condo Conversion 3 bedrooms and 2 bathrooms.

Melrose floor plan

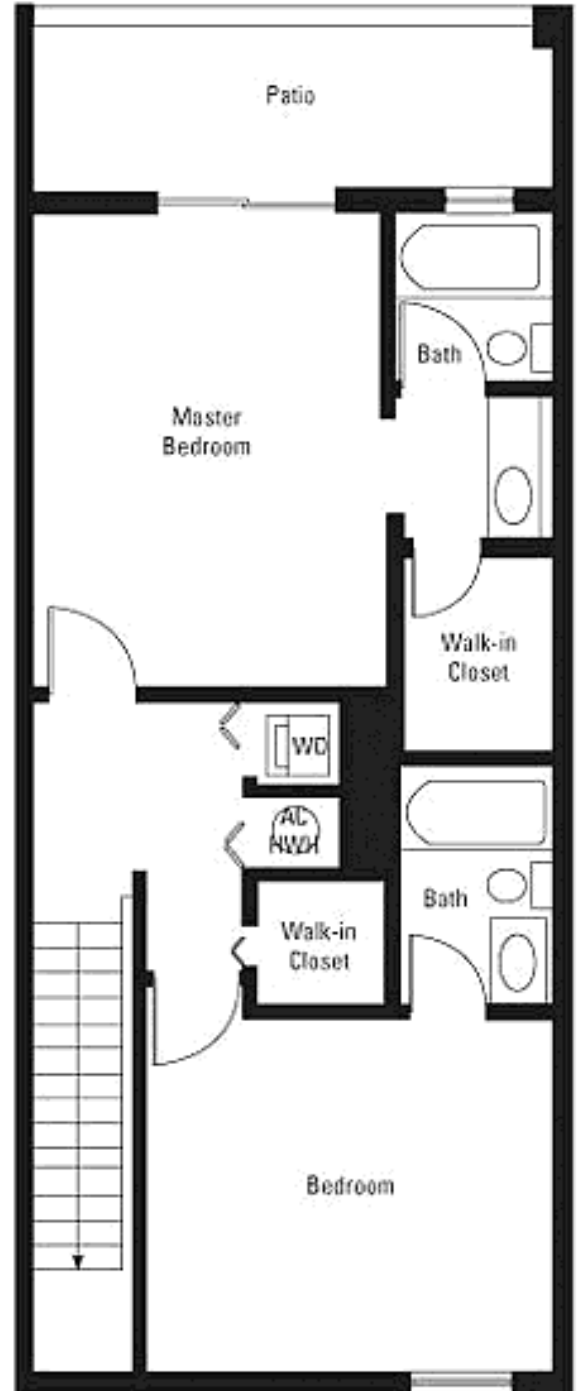
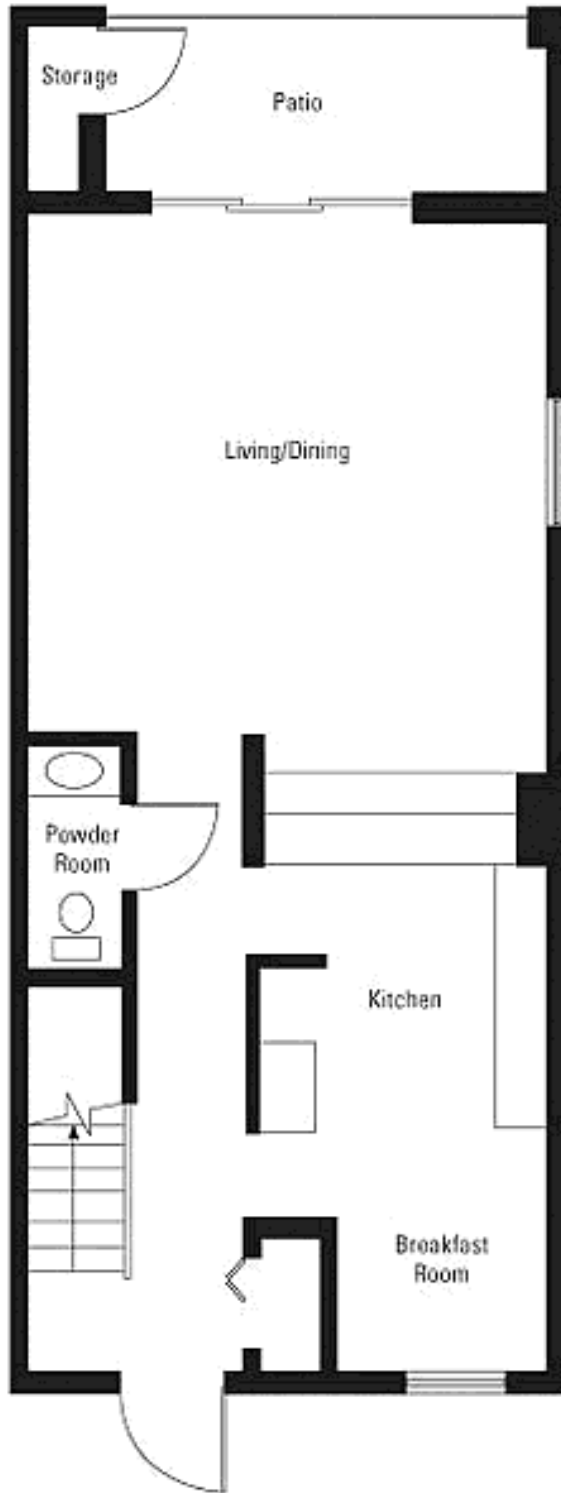
Total Area: 1,400 square feet (1,400 sf interior and 0 sf balcony)



# Boca Condo Conversion 2 bedrooms and 2.5 bathrooms.

Montecito floor plan

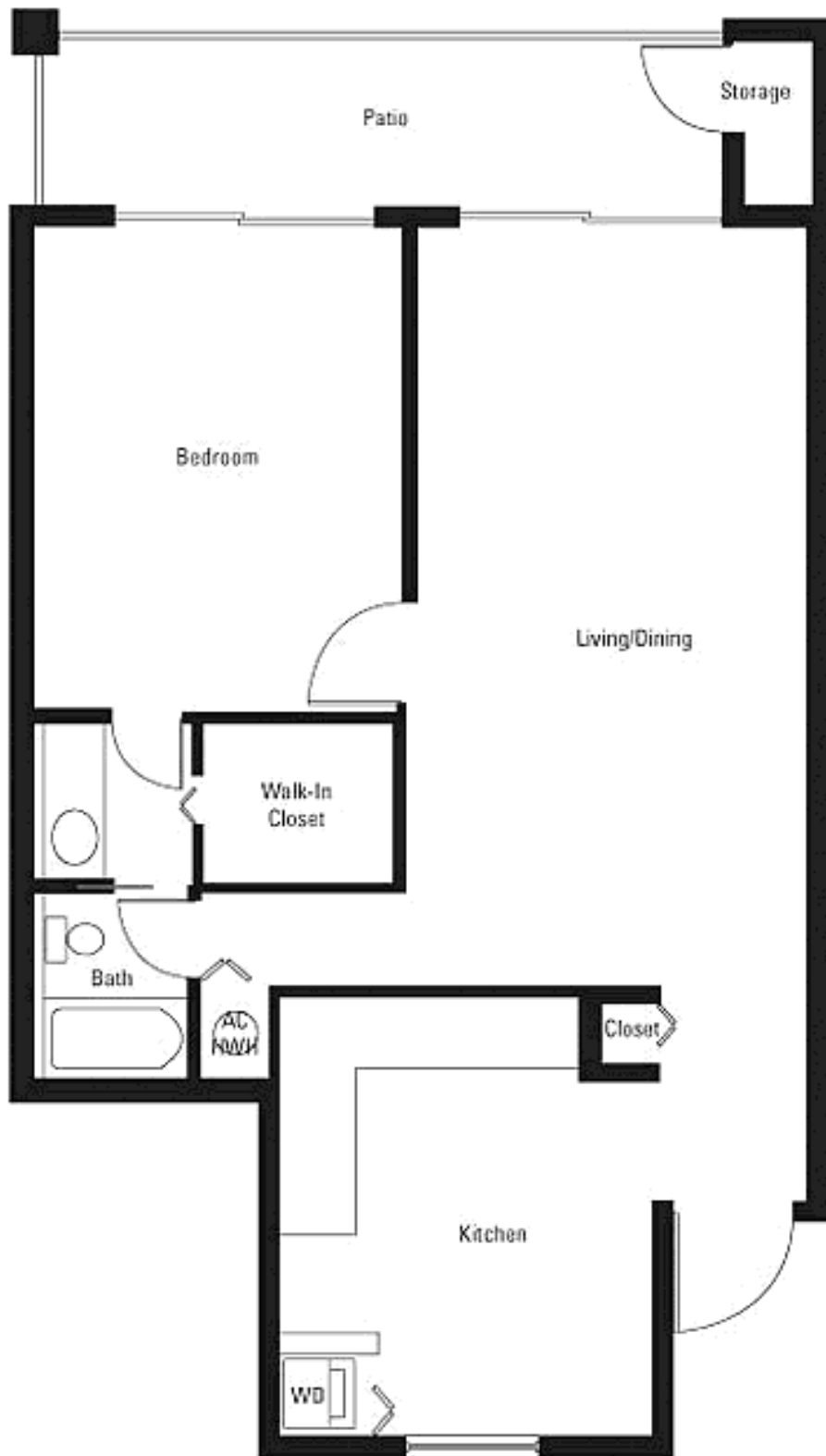
Total Area: 1,800 square feet (1,800 sf interior and 0 sf balcony)



# Boca Condo Conversion 1 bedrooms and 1 bathrooms.

**Pacific** floor plan

Total Area: 1,000 square feet (1,000 sf interior and 0 sf balcony)



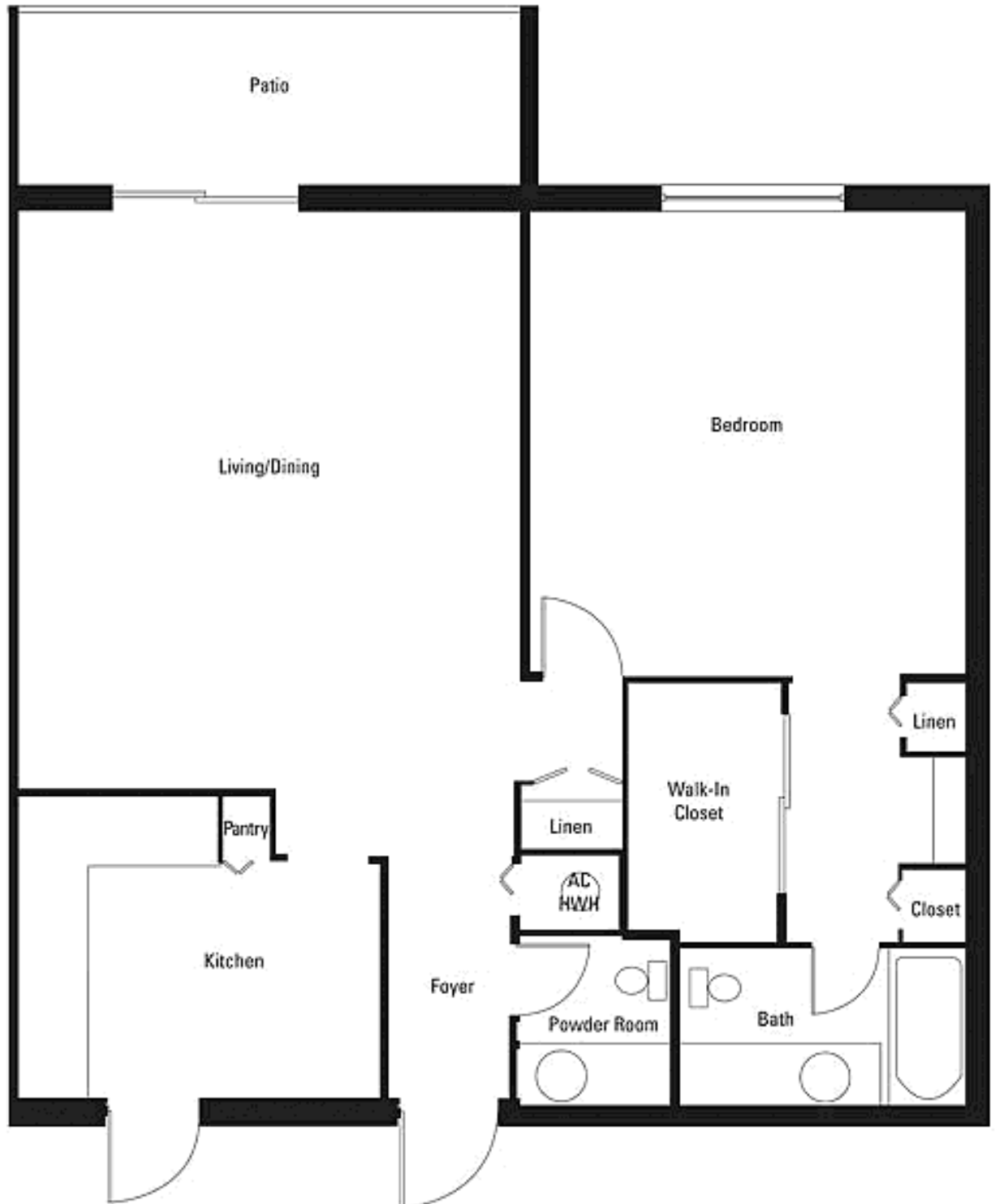
PACIFIC

1 BEDROOM / 1 BATH  
1,000 SQUARE FEET

# Boca Condo Conversion 1 bedrooms and 1 bathrooms.

**Pasadena** floor plan

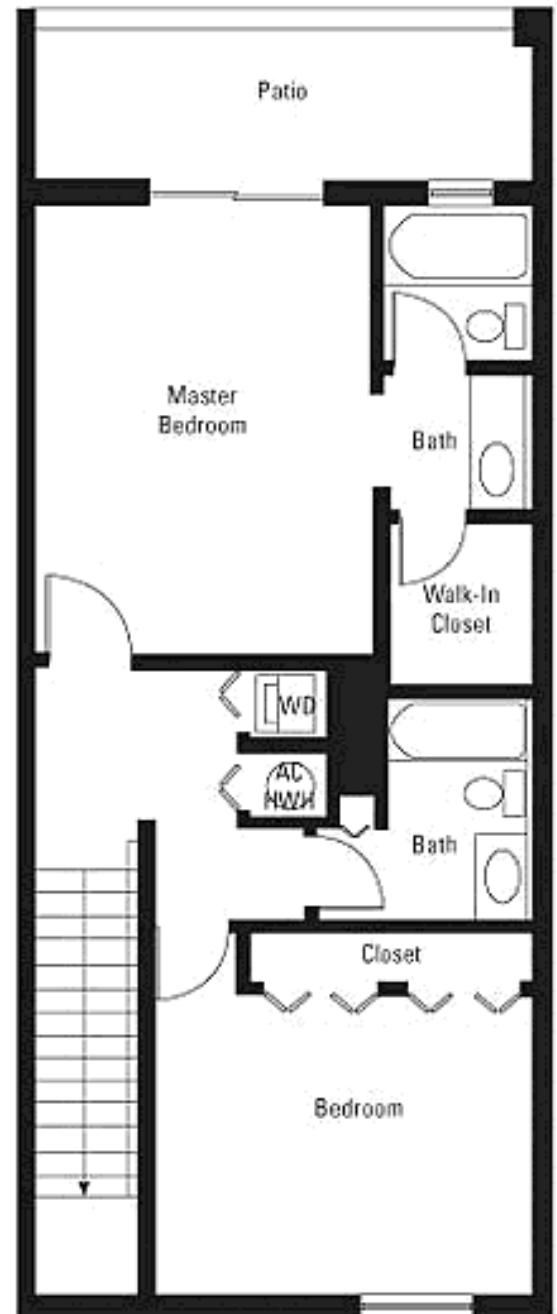
Total Area: 1,020 square feet (1,020 sf interior and 0 sf balcony)



# Boca Condo Conversion 3 bedrooms and 2.5 bathrooms.

**Santa Monica** floor plan

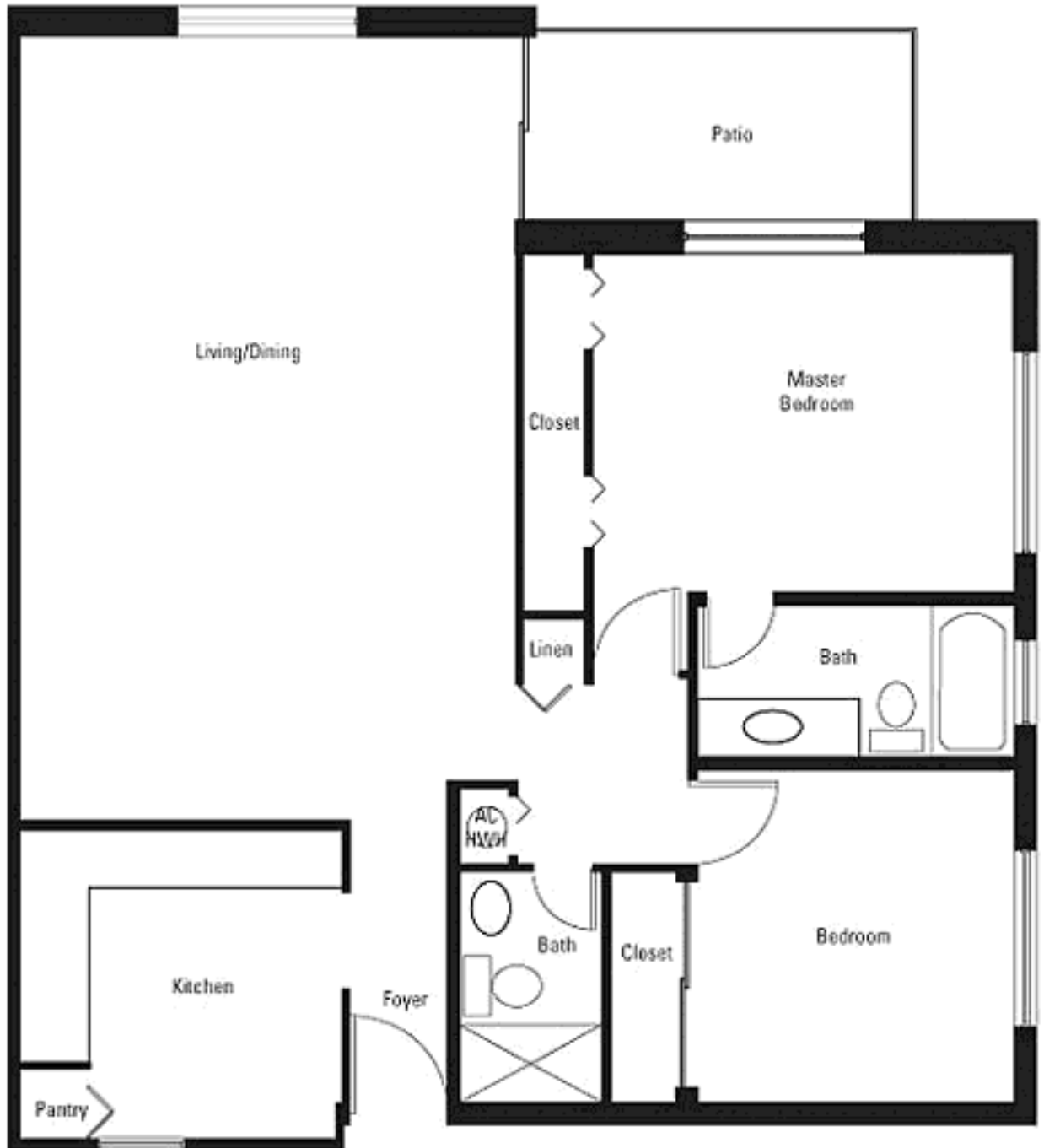
Total Area: 1,800 square feet (1,800 sf interior and 0 sf balcony)



# Boca Condo Conversion 2 bedrooms and 2 bathrooms.

**Sunset** floor plan

Total Area: 1,300 square feet (1,300 sf interior and 0 sf balcony)



**SUNSET**

2 BEDROOM / 2 BATH  
1,300 SQUARE FEET